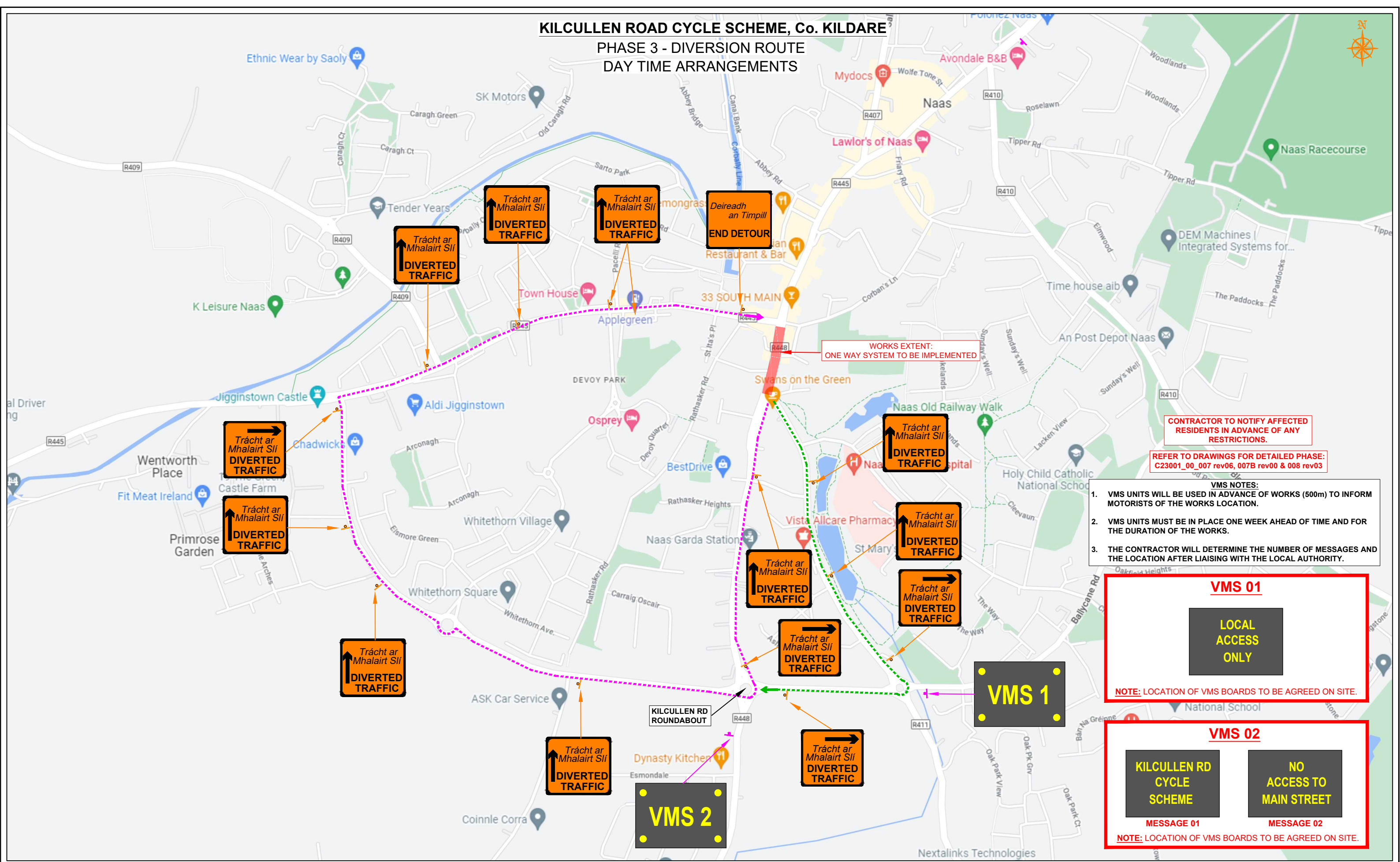


# KILCULLEN ROAD CYCLE SCHEME, Co. KILDARE

## PHASE 3 - DIVERSION ROUTE DAY TIME ARRANGEMENTS



- VMS NOTES:**
- VMS UNITS WILL BE USED IN ADVANCE OF WORKS (500m) TO INFORM MOTORISTS OF THE WORKS LOCATION.
  - VMS UNITS MUST BE IN PLACE ONE WEEK AHEAD OF TIME AND FOR THE DURATION OF THE WORKS.
  - THE CONTRACTOR WILL DETERMINE THE NUMBER OF MESSAGES AND THE LOCATION AFTER LIAISING WITH THE LOCAL AUTHORITY.

CONTRACTOR TO NOTIFY AFFECTED RESIDENTS IN ADVANCE OF ANY RESTRICTIONS.  
REFER TO DRAWINGS FOR DETAILED PHASE: C23001\_00\_007 rev06, 007B rev00 & 008 rev03

**VMS 01**

LOCAL ACCESS ONLY

NOTE: LOCATION OF VMS BOARDS TO BE AGREED ON SITE.

**VMS 02**

KILCULLEN RD CYCLE SCHEME

NO ACCESS TO MAIN STREET

MESSAGE 01

MESSAGE 02

NOTE: LOCATION OF VMS BOARDS TO BE AGREED ON SITE.

**ROAD CONTROL**

Copyright Notes:  
This drawing is the property of Road Control Services Ltd. The design information contained herein is strictly confidential. This document is not to be used, reproduced, disclosed or circulated in whole or in part without prior written consent.

**CLIENT**

**JCL**

**JOHN CRADOCK LTD**

**DESIGN PARAMETERS**

Speed Limit	50 km/h	Sign size (diamond)	600mm
Road Classification	1(iii)	Sign size (circular)	600mm
Roadworks type	A / B	Minimum Cone size	750mm
Number of advance signs	2	Cone spacing at tapers	3m
Sign visibility	50m	Cone spacing longitudinal	3m
Distance between signs	20m	Lateral Safety Zone	0.5m
Taper at lane	N/A	Longitudinal Safety Zone	5m
Taper at hard shoulder	N/A	Minimum lane width	3.0m

**LEGEND**

	Traffic sign
	VMS Board
	Local Access
	Works in Place
	Diversion Route A
	Local Diversion

**GENERAL NOTES**

- All information contained in this drawing (including digital data) should be checked and verified prior to any stage of construction;
- All works are to be carried out in accordance with local authority requirements and are to be included in the site-specific safety & health plan;
- Site inspections and maintenance of the traffic management layout is to be agreed with local authority to ensure the safety and integrity of the design;
- Contractor to carry out a site risk assessment prior to the installation of any traffic management plan to ensure that conditions reflect those considered for design post submission;
- Contractor shall be responsible for the provision of ramp access at any change in road surface level where traffic runs on a temporary surface, and for pedestrian/cycle ramps where footpath/cycle-ways have a level discontinuity as per result of the works.

Rev	Date	Details	Dm	Chk	App	Dm	BC
						Chk	AB
						App	DH
						Date	06-12-2023
						Scale	A1 NTS A3 NTS
						Stage	CONSTRUCTION

**Project**

**KILCULLEN ROAD CYCLE SCHEME @ Co. KILDARE**

**Title**

**TRAFFIC MANAGEMENT PLAN PHASE 3 DAY TIME ARRANGEMENTS**

Drawing No: C23001\_00\_009A Rev: 0